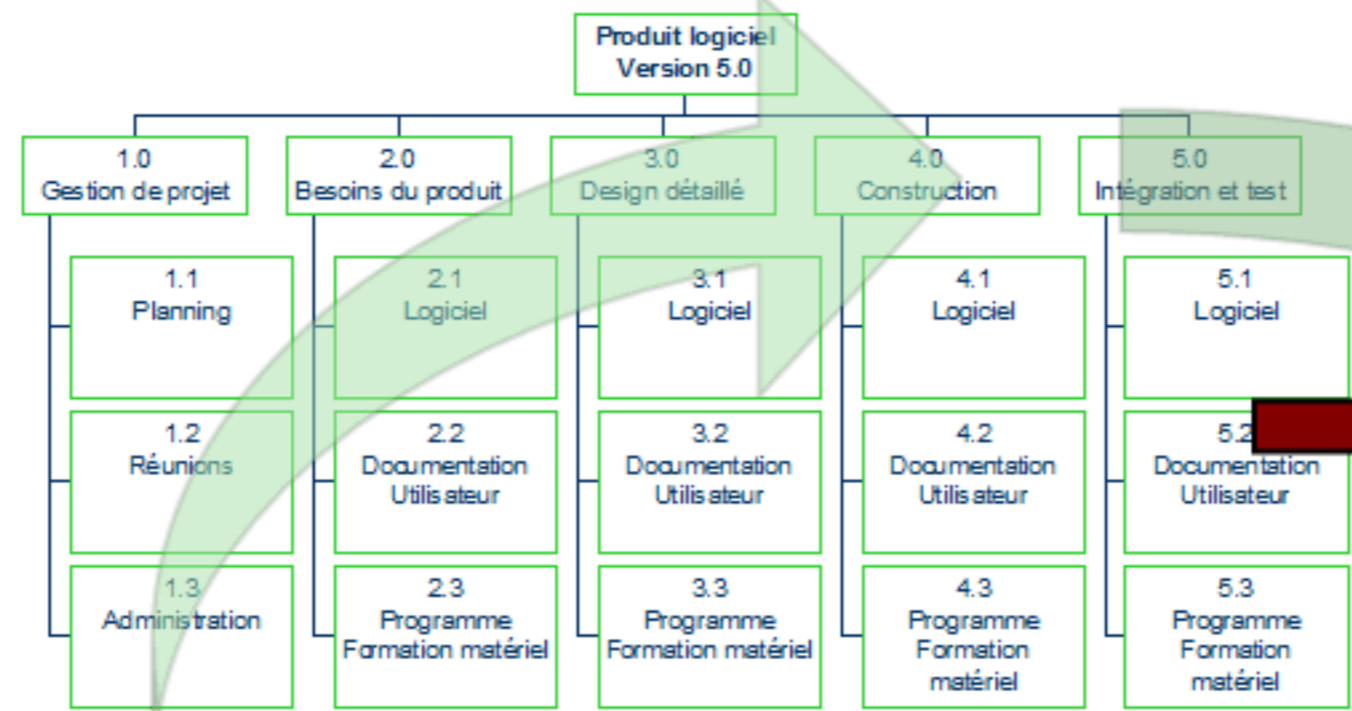
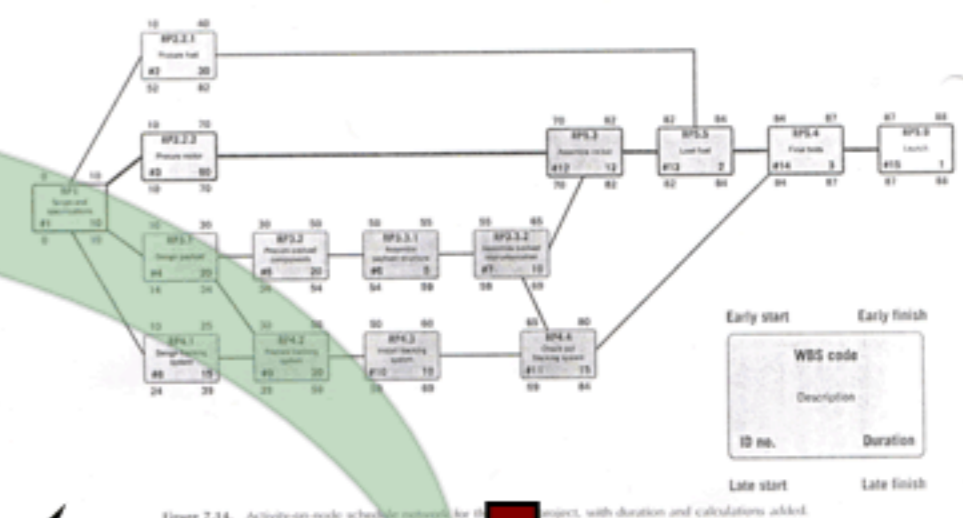


Phase
identification
Objectifs
Livrables
Contraintes

Définition - WBS

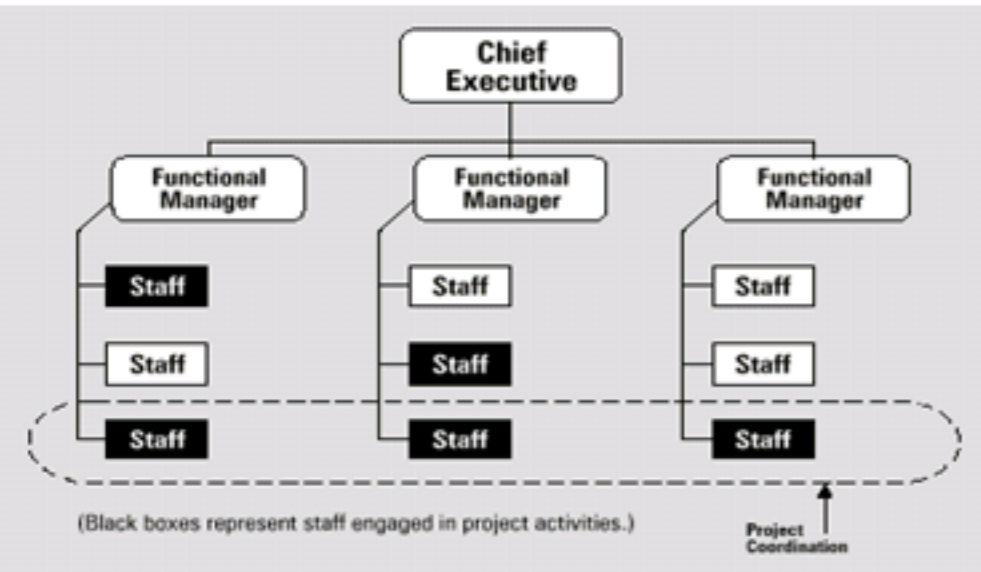


Le processus - PERT



Estimation

Organisation



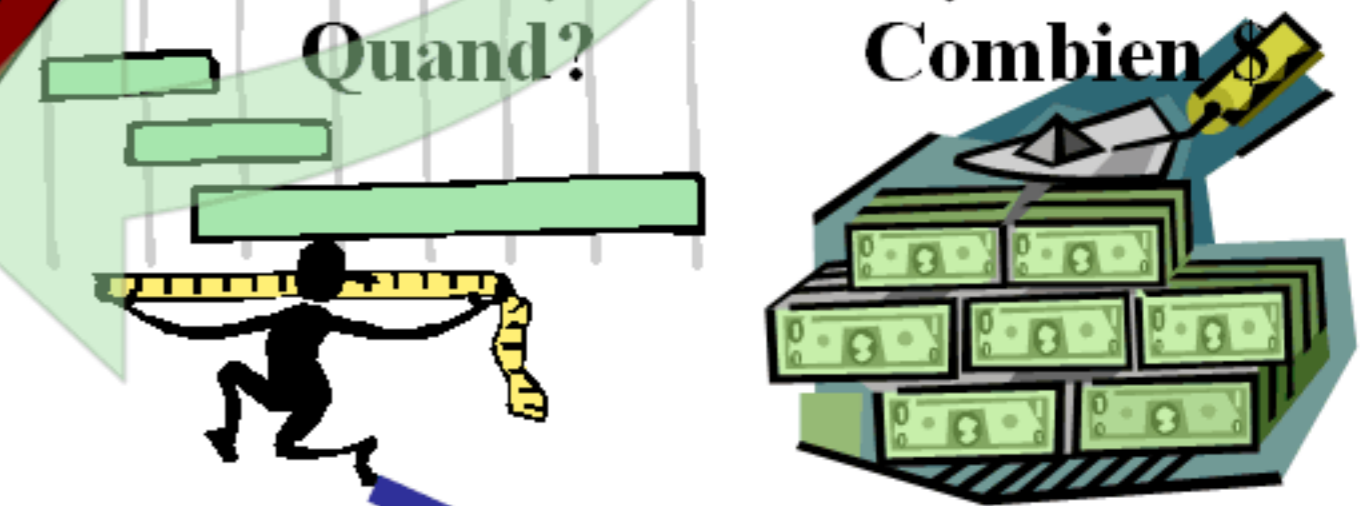
Lots de travail

Charte des responsabilités

Lots	Participants				
	#1	#2	#3	#4	#5
Lot #1					
Lot #2					
Lot #3					
Lot #4					
Lot #5					
Lot #6					

Quand?

Combien \$



Exécution (Contrôle et suivi) et la terminaison du projet